
A-level GEOGRAPHY

Paper 2 Human Geography

Insert

This insert contains:

- Figures 2a and 2b for use with Question 1
- Figures 3a and 3b for use with Question 2
- Figure 5 for use with Question 3
- Figure 6 for use with Question 3
- Key for Figure 6
- Figures 7a and 7b for use with Question 4
- Figures 8a, 8b and 8c for use with Question 4
- Figures 10a and 10b for use with Question 5

Figure 2a – percentage breakdown of main tourist activities for visitors to Antarctica in 2016–17. In the 2016–17 season there were 44 202 visitors to Antarctica.

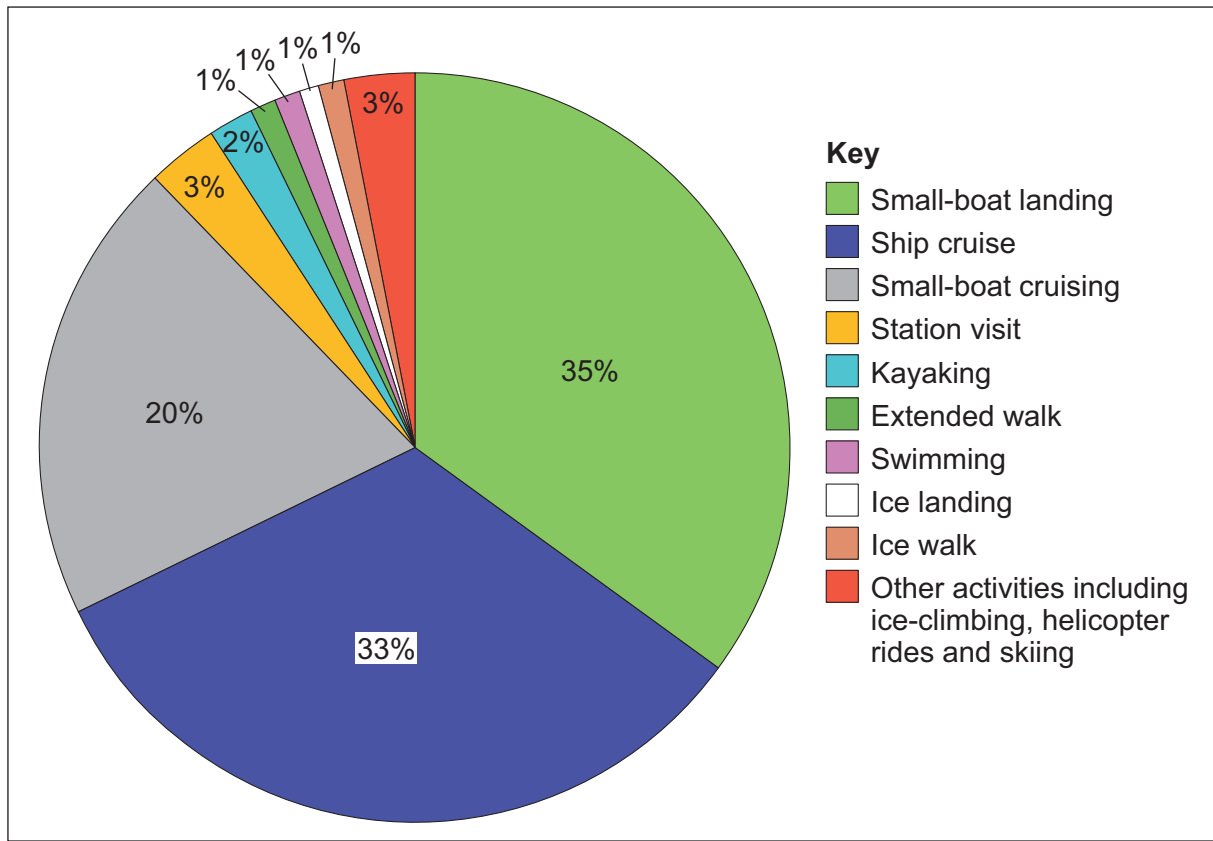


Figure 2b – a small-boat landing party of tourists visiting a penguin colony on South Orkney Islands in Antarctica



Figure 3a – the results of a survey asking residents about their perception of safety in Cardiff in 2016

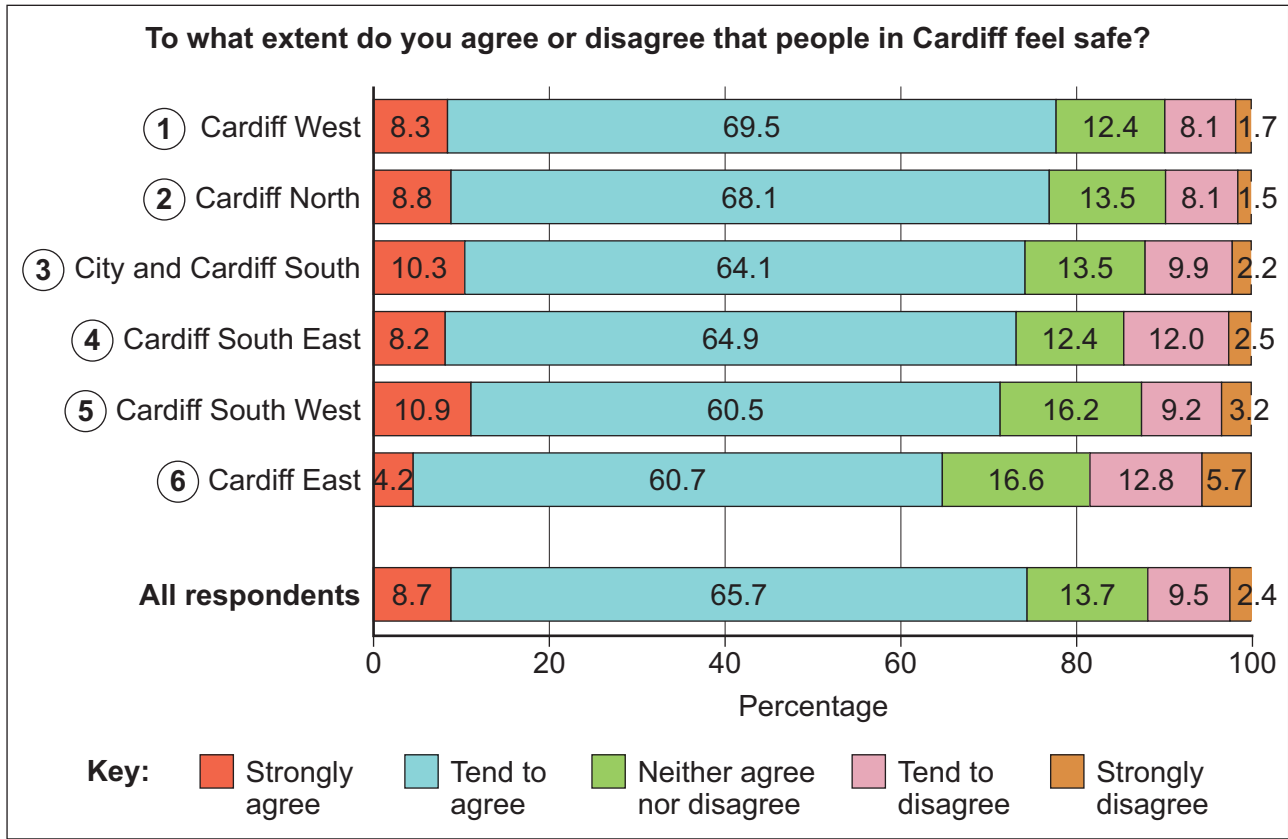


Figure 3b – the incidence of violent crime in Cardiff in 2016

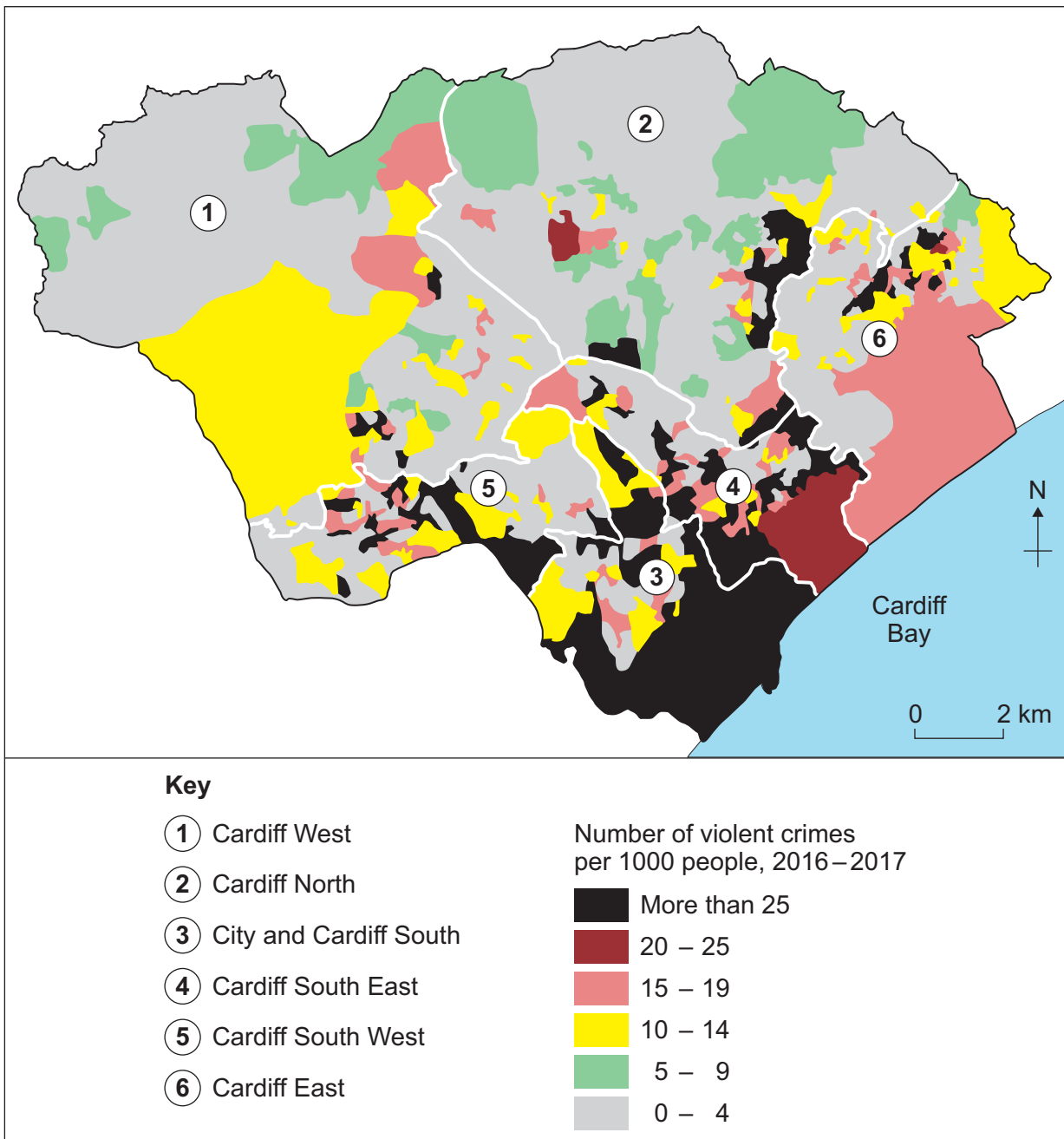
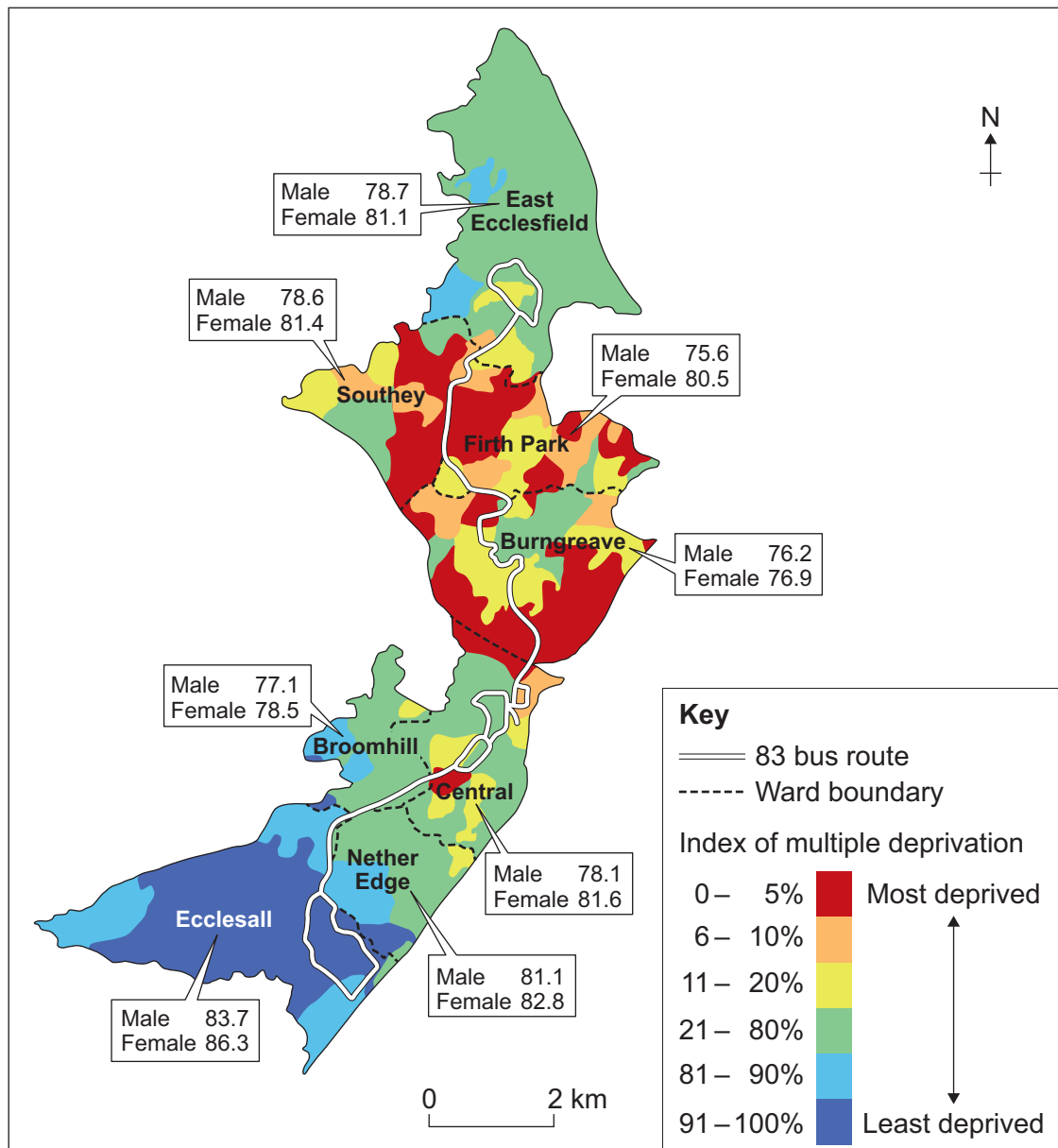


Figure 5 – the change in life expectancy along the number 83 bus route in Sheffield, a city in the UK. The index of multiple deprivation is also shown on the map.



Note: The life expectancy data provided is the average for each ward.

There are no resources printed on this page

Turn over for the next figure

Turn over ►

Figure 6 – an OS map extract of Plymouth, a city on the south west coast of England



Key for Figure 6, the OS map extract

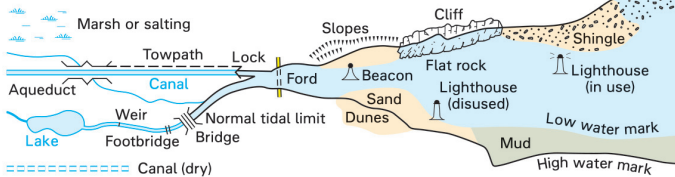
ROADS AND PATHS

Junction number Service area Unfenced A 470 A 493 B 4518 A 855 Bridge B 885 Path / Other road, drive or track Gradient: steeper than 20% (1 in 5), 14% to 20% (1 in 7 to 1 in 5) Gates, Road tunnel Ferry P Ferry V	Not necessarily rights of way Motorway (dual carriageway) Primary Route (recommended through route) Main road Road under construction Secondary road Narrow road with passing places Road generally more than 4m wide Road generally less than 4m wide Path / Other road, drive or track Gradient: steeper than 20% (1 in 5), 14% to 20% (1 in 7 to 1 in 5) Gates, Road tunnel Ferry (passenger), Ferry (vehicle)
--	---

RAILWAYS

Track multiple or single Track under construction Siding Tunnel, cuttings Light rapid transit system, narrow gauge or tramway	Bridges, footbridge Level crossing Viaduct, embankment Station, (a) principal Light rapid transit system station
---	--

WATER FEATURES



HEIGHTS

1 metre = 3.2808 feet	
50	Contours are at 10 metres vertical interval
144	Heights are to the nearest metre above mean sea level

Where two heights are shown the first height is to the base of the triangulation pillar and the second (in brackets) to the highest natural point of the hill

PUBLIC RIGHTS OF WAY

	Footpath
	Bridleway
	Restricted byway
	Byway open to all traffic

The symbols show the defined route so far as the scale of mapping will allow.

The representation on this map of any other road, track or path is no evidence of the existence of a right of way. Not shown on maps of Scotland

Danger Area Firing and Test Ranges in the area. Danger! Observe warning notices.

BOUNDARIES

	National
	District
	County, Unitary Authority, Metropolitan District or London Borough
	National Park

ROCK FEATURES



OTHER PUBLIC ACCESS

	Other route with public access (not normally shown in urban areas). Alignments are based on the best information available. These routes are not shown on maps of Scotland.
	On-road cycle route
	Traffic-free cycle route
	National Cycle Network number
	Regional Cycle Network number
	National Trail, European Long Distance Path, Long Distance Route, selected Recreational Routes

ANTIQUITIES

	Site of antiquity
	Battlefield (with date)
	Visible earthwork
	Roman
	Non-Roman

TOURIST INFORMATION

	Camp site / caravan site
	Garden
	Golf course or links
	Information centre (all year / seasonal)
	Nature reserve
	Parking, Park and ride (all year / seasonal)
	Picnic site
	Recreation / leisure / sports centre
	Selected places of tourist interest
	Telephone, public / roadside assistance
	Viewpoint
	Visitor centre
	Walks / Trails
	World Heritage site or area
	Youth hostel

LAND FEATURES

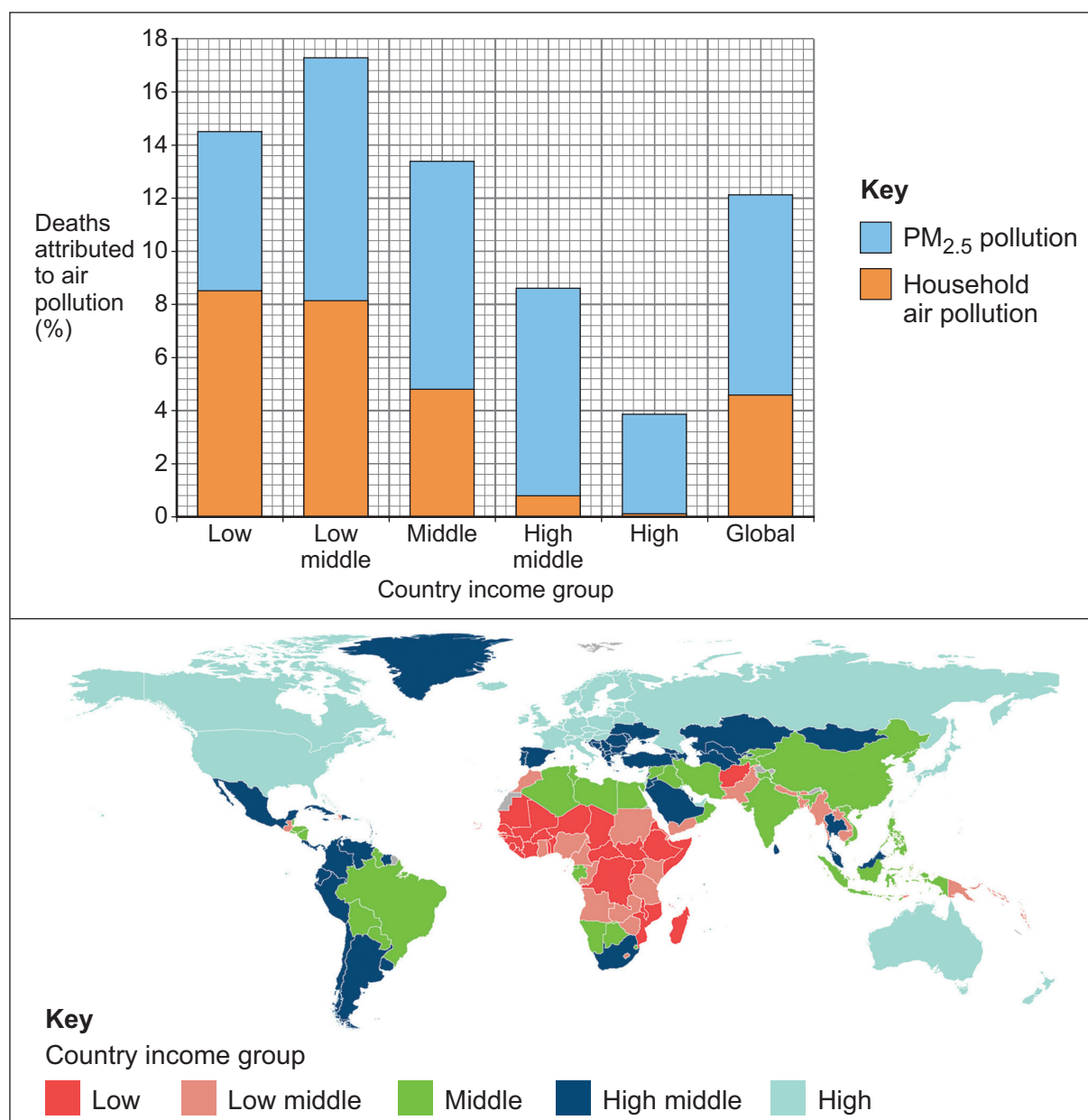
	Electricity transmission line (pylons shown at standard spacing)
	Pipe line (arrow indicates direction of flow)
	Buildings
	Important building (selected)
	Bus or coach station
	Current or former place of worship
	Place of worship
	Glass structure
	Heliport
	Triangulation pillar
	Mast
	Wind pump, wind turbine
	Windmill with or without sails
	Graticule intersection at 5' intervals
	Cutting, embankment
	Landfill site or slag/spoil heap
	Coniferous wood
	Non-coniferous wood
	Mixed wood
	Orchard
	Park or ornamental ground
	Forestry Commission land
	National Trust (always open / limited access, observe local signs)
	National Trust for Scotland (always open / limited access, observe local signs)

ABBREVIATIONS

Br	Bridge	MS	Milestone
Cemy	Cemetery	MUS	Museum
CG	Cattle grid	P	Post office
CH	Clubhouse	PC	Public convenience (in rural areas)
Fm	Farm	PH	Public house
Ho	House	Sch	School
MP	Milepost	TH	Town Hall, Guildhall or equivalent

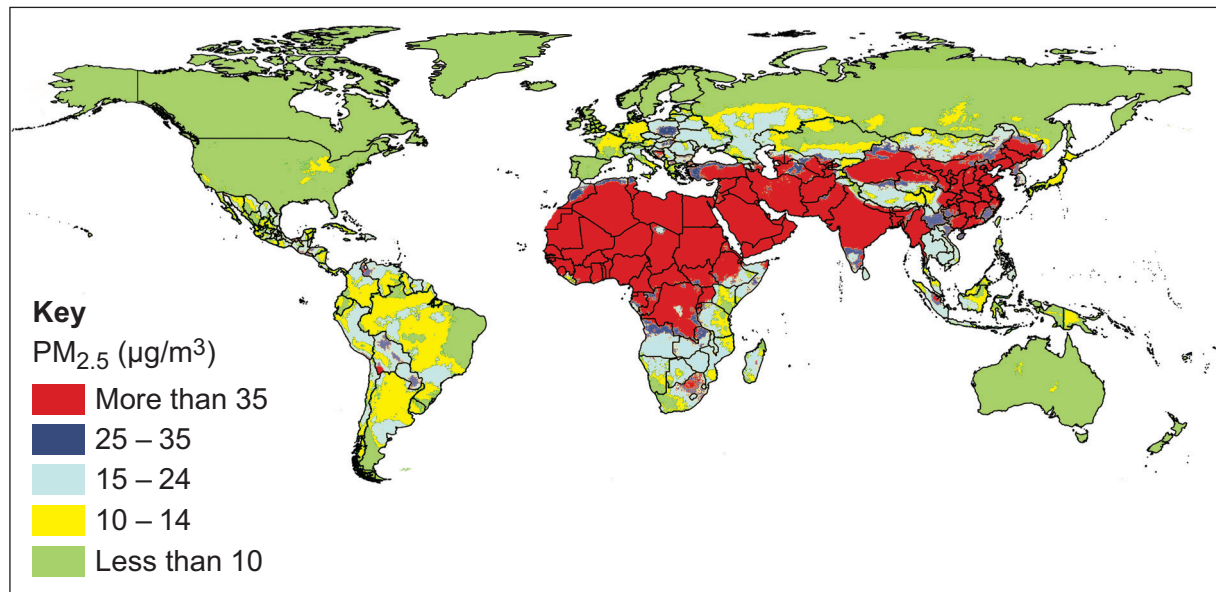
Turn over ►

Figure 7a – deaths attributed to air pollution by country income groups in 2016



Note: PM_{2.5} refers to fine particles with diameters less than 2.5 micrometers.

Figure 7b – the global distribution of the concentration of PM_{2.5} atmospheric pollution in 2016



Note: The WHO Guideline for healthy air is less than 10 PM_{2.5}

**Figure 8a – the number of refugees received by selected European countries
from 1 January to 30 June 2015**

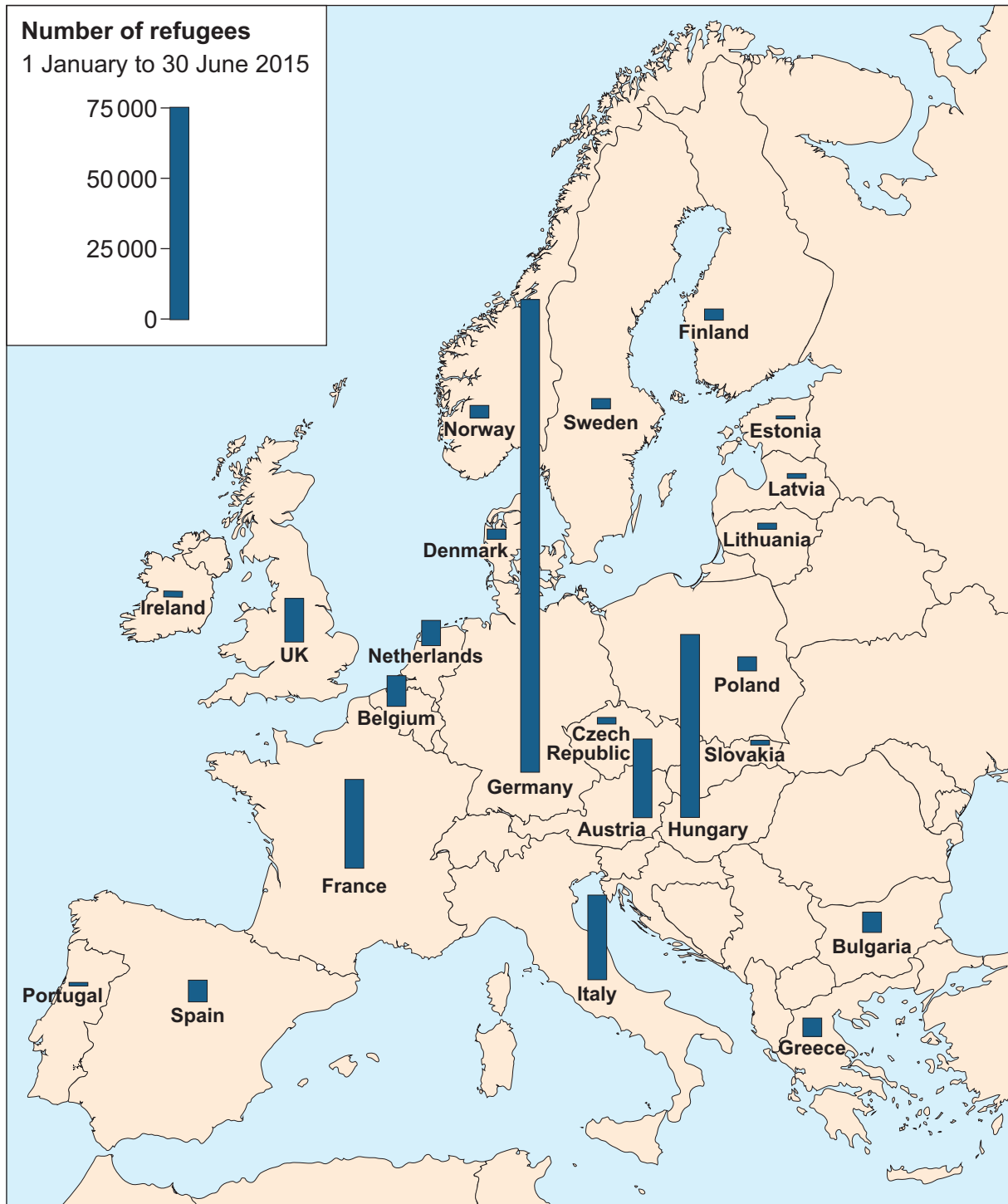


Figure 8b – the rise of anti-immigration parties in selected European countries between 2013 and 2018

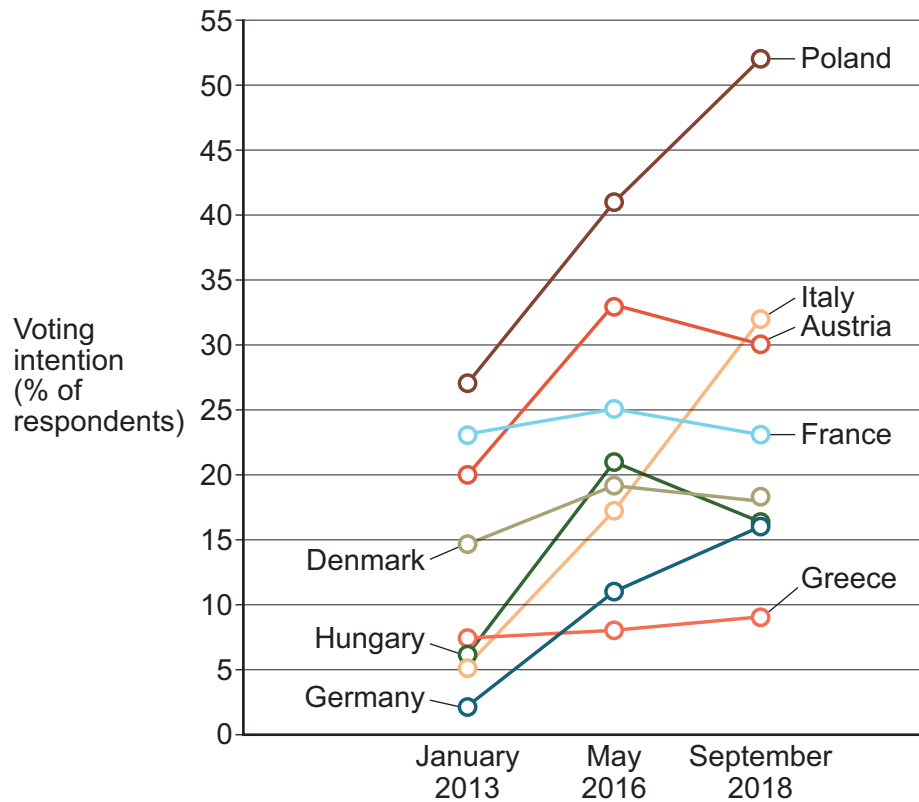


Figure 8c – placards used at a 'Refugees welcome here' march in London held in 2016



Figure 10a – selected gas pipelines and liquefied natural gas terminals in Europe in 2014



Figure 10b – gas consumption and the level of dependence on Russian gas in 2014

World map showing gas consumption and the level of dependence on Russian gas in 2014 cannot be reproduced here due to third-party copyright restrictions.

END OF SOURCES

There are no resources printed on this page

Copyright information

For confidentiality purposes, all acknowledgements of third-party copyright material are published in a separate booklet. This booklet is published after each live examination series and is available for free download from www.aqa.org.uk.

Permission to reproduce all copyright material has been applied for. In some cases, efforts to contact copyright-holders may have been unsuccessful and AQA will be happy to rectify any omissions of acknowledgements. If you have any queries please contact the Copyright Team.

Copyright © 2020 AQA and its licensors. All rights reserved.



2 0 6 A 7 0 3 7 / 2